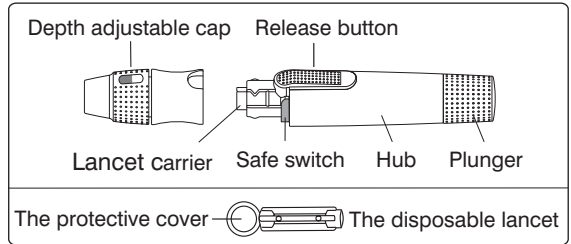


# Instructions for the *Rightest*™ GD 500 Lancing Device

The GD500 lancing device is reusable lancing device for the single user. It could automatically inject the lancet into and retract it from the fingertip to obtain a capillary blood sample for glucose monitoring or other test that require one or two drops of blood.

A depth adjustable cap allows the best depth of skin penetration for each individual user.



## Special Features

- Special safety design: when the cap is open, the trigger will be relieved automatically which prevents you from being pricked in case you accidentally press the release button.
- Lancet eject function: press the release button in one hand and pull on the plunger in the other hand will safely eject the used lancet which prevents you from being pricked when the cap is open. ( please refer to the figure of step10 )
- Less pain pricking: exact and vibration free guidance of the lancet makes you feel less pain when you get the blood sample.
- Proper spring force: allow user to pull on the plunger for pricking easily.
- Clear indications of depth penetration: allow user to adjust for proper sample volume easily.

## Cautions:

- Be careful not to be pricked by the lancet whenever the adjustable cap is open with lancet loaded.
- The *Rightest*™ Lancing Device is intended for single user. To avoid exposure to contaminants, do not use the *Rightest*™ Lancing Device on multiple users.
- For safety and to prevent cross-contamination, always discard used disposable lancets in an appropriate puncture-proof or biohazard container.
- Except following the use instructions, please don't disassemble the lancing device under any condition.
- The lancing device contains some small parts which could result in choking hazard for children.

## Instructions for use:

### (1) Fingertip

Please clean your hands with soap and warm water; dry them thoroughly.

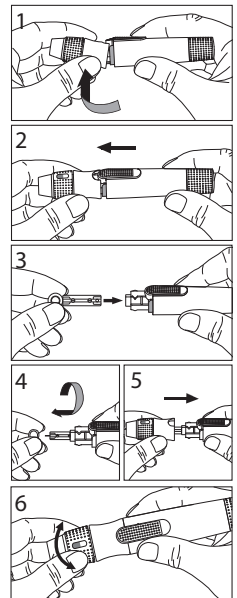
Warming your hands will help in obtaining a blood sample. Follow the steps below. Each step corresponds to the number illustrations.

1. Hold the adjustable cap in one hand and hold the hub in the other hand.  
Bend the cap towards the down side. When a gap appears between the cap and hub, pull them off in opposite directions.
2. Pull off the depth adjustable cap.
3. Insert a new disposable lancet firmly into lancet carrier.
4. Twist off and set aside the protective cover of the disposable lancet.
5. Replace the depth adjustable cap.
6. Choose a depth of penetration by rotating the top portion of the depth adjustable cap until the setting depth matches the window. Settings are based on skin type

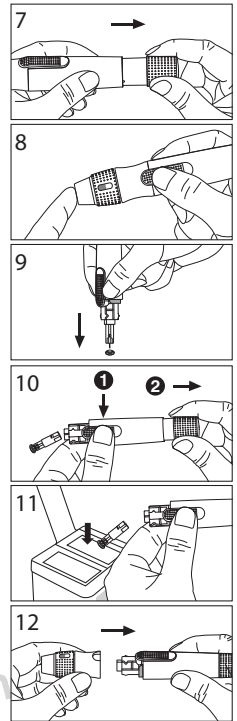
” ■■ “ for soft or thin skin;

” ■■■ “ for average skin;

” ■■■■ “ for thick or calloused skin.

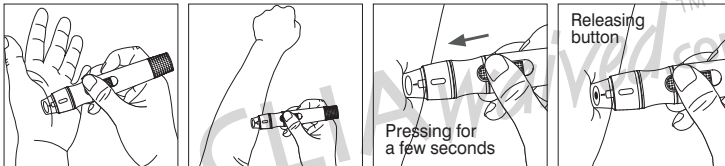


7. Hold the hub in one hand and pull on the plunger in the other hand. The device will be cocked. Release the plunger, it will automatically move back to its original position near the hub.
8. Place the **Rightest™** Lancing Device against the soft side of the fingertip. The best puncture sites are on the middle or ring fingers. Press the release button to activate the device.
9. Pull off the depth adjustable cap. Without touching the used disposable lancet, stick the lancet tip into the protective cover.
10. Hold the release button in one hand and pull on the plunger in the other hand will safely eject the used disposable lancet.
11. Discard the used disposable lancet into an appropriate puncture-proof or biohazard container.
12. Replace the depth adjustable cap after finishing the test.



#### (2) Palm or forearm for alternative site test

1. Choose **clear cap** and follow step 1 to step 5.
2. Massage the puncture area of palm or forearm for a few seconds.
3. Immediately after massaging the puncture area, press and hold the lancing device with the clear cap against palm or forearm.
4. Then press the release button.
5. Continue holding the lancing device against palm or forearm and gradually increase pressure for a few seconds until the blood sample size is sufficient.
6. Follow step 9~12 to discard the used disposable lancet.



#### Cleaning

Use a clean damp cloth to wipe the outside of the **Rightest™** Lancing Device. To avoid rusting the internal spring, do not submerge the device in water or wash the device in the dishwasher.

#### Warranty

Bionime Corporation warrants that your **Rightest™** Lancing Device is free from defects for two years from the date of purchase. Any defects in materials or caused by workmanship will get repaired or get a new replaced one of this device free of charge.

This warranty does not apply to the performance of a **Rightest™** Lancing Device has been misused, tampered with or abused in any way. This warranty will provide you legal rights under law.

#### Customer Service

We sincerely like to provide complete, considerate services. Please review all the instructions to make sure you are performing the steps correctly. You are always welcome to contact us by call: 886 4 24951268 (GMT +8:00, 08:30~17:30), or by email at [info@bionime.com](mailto:info@bionime.com)

# BIONIME

Distributed by: **CLIAwaived.com™**  
 San Diego, CA 92121  
 tel 858-481-5031  
 toll free 888-882-7739  
[www.cliaawaved.com](http://www.cliaawaved.com)



101-3GD500-11X  
 EN