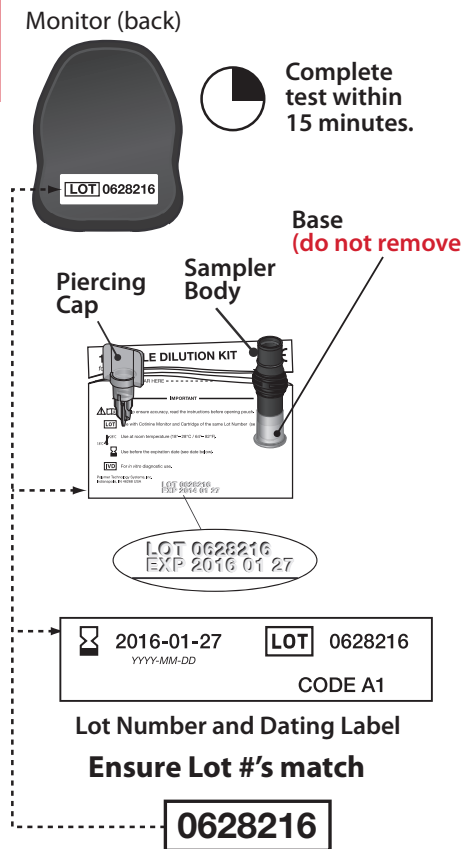


PROFESSIONAL
PROCEDURE
GUIDE

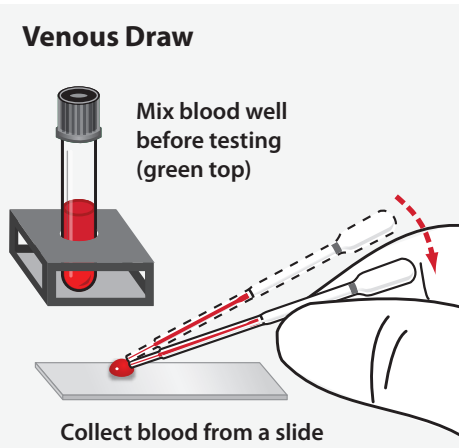
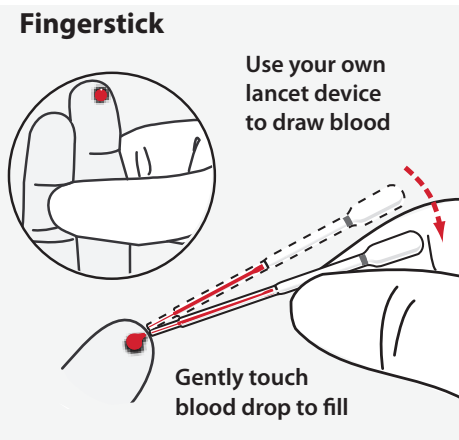
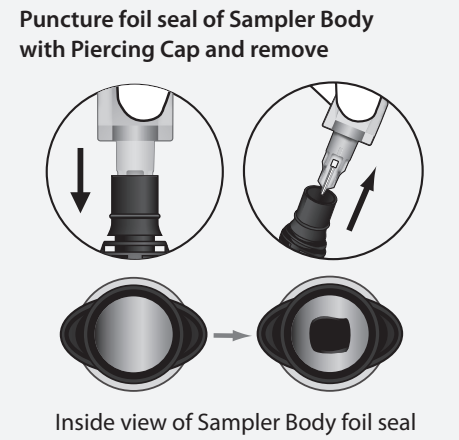
91146 A 7/2015

1 Preparation
BEFORE YOU BEGIN

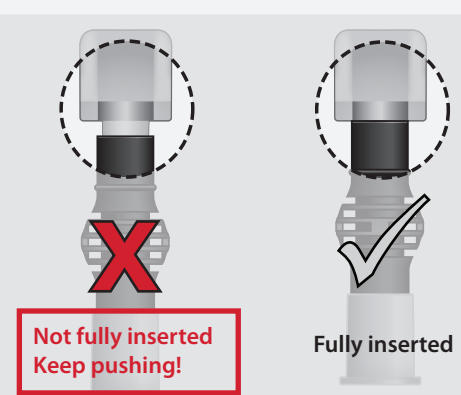
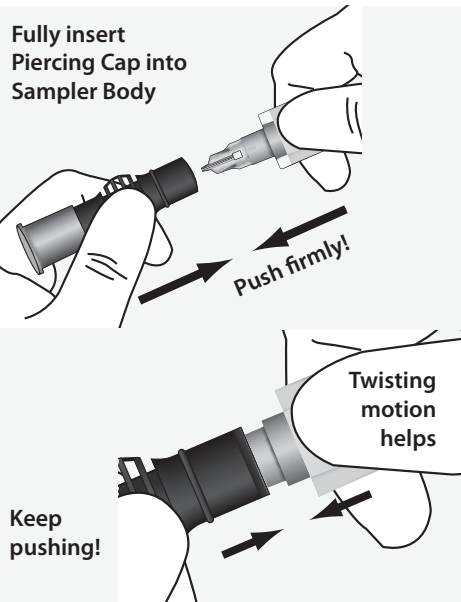
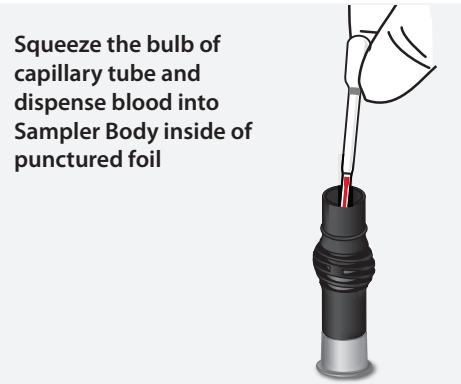
- Run the test with all parts of the test kit at the same temperature within the specified range.
- If the kit has recently been at high temperatures (above 82°F) or in the refrigerator, keep the kit at room temperature for at least one hour before use.
- Avoid running the test in direct sunlight, on hot or cold surfaces, or near sources of heat or cold.



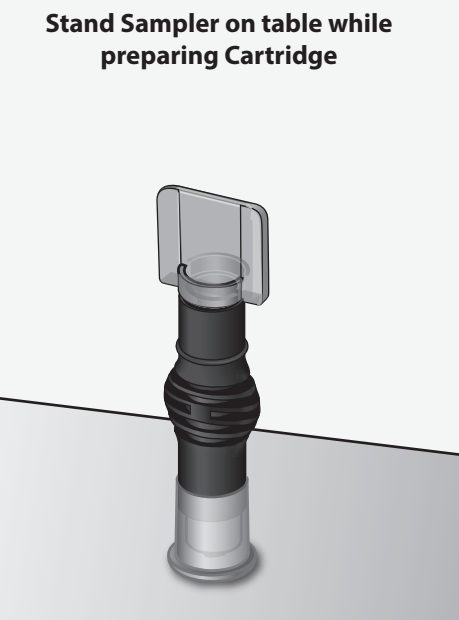
2 Blood Collection
COLLECT BLOOD



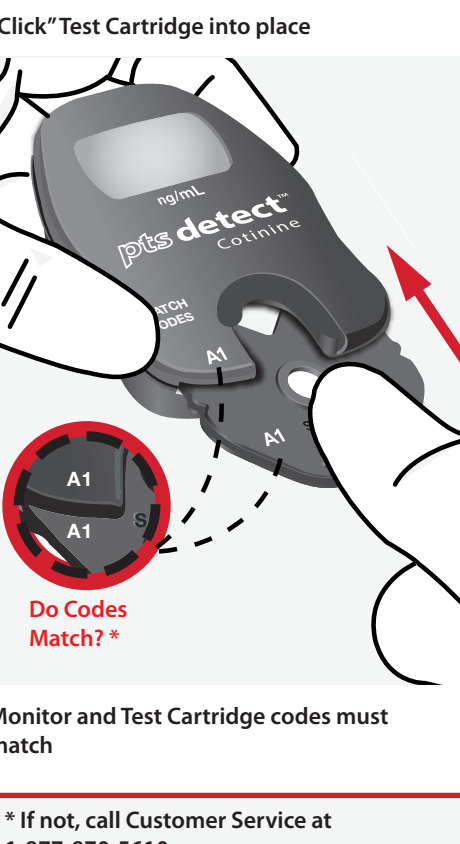
3 Blood Dilution
DISPENSE BLOOD



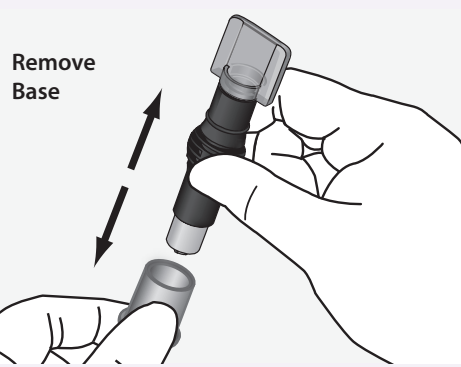
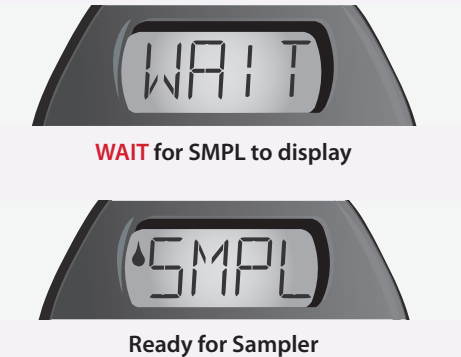
4 MIX



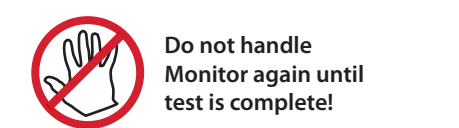
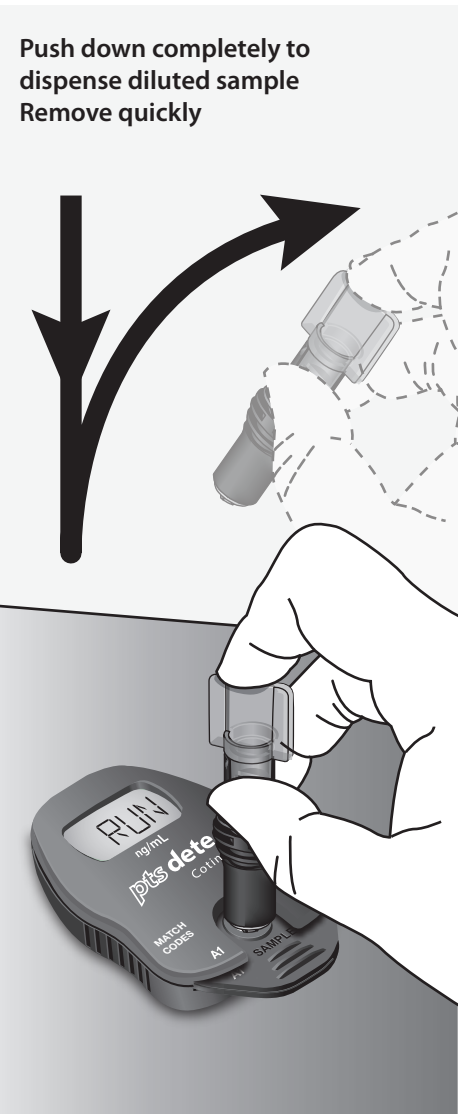
5 INSERT CARTRIDGE



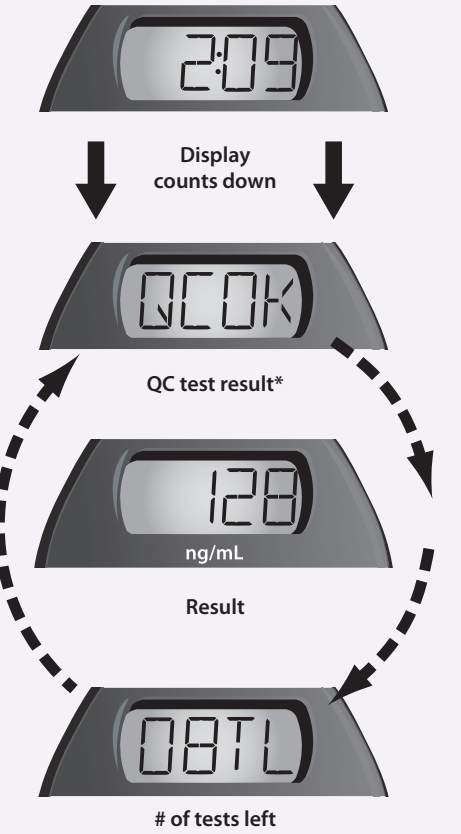
6 Blood Testing
PREPARE SAMPLER



7 DISPENSE SAMPLE INTO CARTRIDGE



8 Results
5 MINUTES TO RESULTS

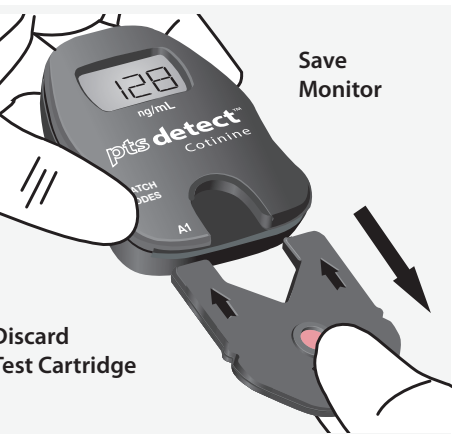


This result cycle remains displayed for 15 minutes or until the next Test Cartridge is inserted.

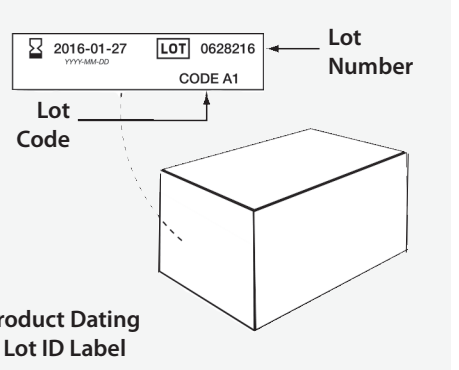
* If "QCOK" is not displayed, please contact Customer Service.

If you cannot resolve an error, please call Customer Service at 1-877-870-5610.

9 REUSE MONITOR



THE MONITOR IS REUSABLE
To run another test, use a new Capillary Tube, Sampler and Test Cartridge from the same kit and return to Step 1, "PREPARATION."



ALWAYS MATCH LOT NUMBERS
Use Monitor only with the materials included in the original kit. The Monitor will expire after the programmed number of tests have been run. If another Test Cartridge is inserted, the Monitor will display "00 TL."