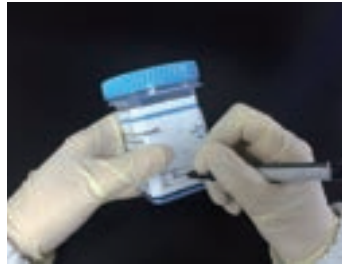
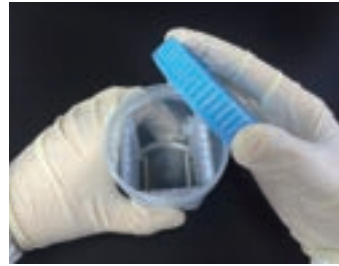


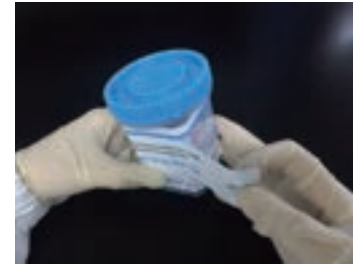
1. Remove the cup from the foil pouch.



2. Write donor ID and date on the label.



3. Collect specimen in the cup.



4. At 5 minutes, peel the label and read results. Do not read after 60 minutes.

## INTERPRETATION OF RESULT

Each strip contains one drug test. C region shows validity of a test result. T region shows result for this test.

### For C region:

The appearance of a line indicates a valid result.

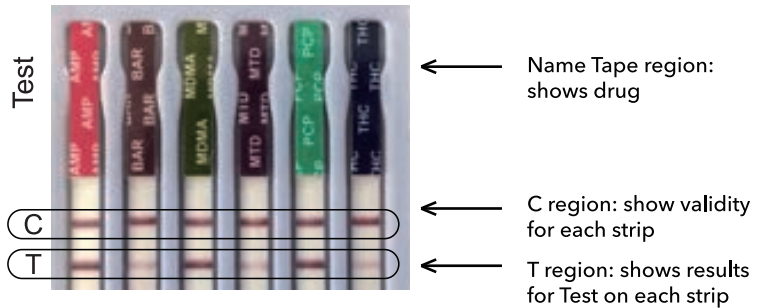
No line means an Invalid result.

If a test strip does not have a line in the C region, test results are Invalid for this strip.

### For T region:

The appearance of a line indicates a Negative result.

Note: Any test line, even a very faint test line, is considered a negative result.



No line indicates a Preliminary Positive result.

Note: Any urine with preliminary positive results should be sent to a laboratory for confirmation.



### Example #1 (Negative Result)

A red or pink line next to the "T" (drug test line) under the drug name indicates a negative result for that drug. Certain lines may appear lighter or thinner than other lines.

Therefore, it is Negative for all tests.



### Example #2 (Preliminary Positive Result)

If NO red or pink line appears next to the "T" under the drug name, the sample may contain that drug.

Therefore, it is Preliminary Positive for AMP and THC.

All other tests are Negative.



### Example #3 (Invalid Result)

A colored line should always appear next to the letter "C" on every test strip. If no control line appears on any of test strips, the result is invalid.

Therefore it is Invalid for both MTD and TCA tests. All other tests are Negative.

## CLIAwaived,™ Inc. INSTANT DRUG TEST CUP PLUS



### DETECTS UP TO 17 DRUGS

- Amphetamine (AMP)
- Barbiturates (BAR)
- Buprenorphine (BUP)
- Benzodiazepines (BZO)
- Cocaine (COC)
- Ecstasy (MDMA)
- Methadone (MTD)
- Methadone Metabolite (EDDP)
- Methamphetamine (MET)
- Marijuana (THC)
- Opiates 300 (OPI 300)
- Oxycodone (OXY)
- Phencyclidine (PCP)
- Tricyclic Antidepressants (TCA)
- Fentanyl (FEN)
- Norfentanyl (NORFEN)
- Morphine (MOR)



- Fast, dark test lines
- FDA-cleared and CLIA-waived
- None-negative results in five minutes
- Donor-friendly cup opening
- Results can be photocopied
- Optional tests for adulterants
- Remarkable pricing and quality

	ADULT	AMP	BAR	BUP	BZO	COC	EDDP	FEN*	MDMA	MET	MOR	MTD	OPI	OXY	PCP	TCA	THC	PACKAGING: 25 CUPS
5	■				■				■	■			■				■	CLIA-IDTC-5-60527A
7				■	■				■	■	■		■				■	CLIA-IDTC-7-60717
7	■	■			■			■				■	■	■			■	CLIA-IDTC-7-60774-A
12		■	■	■	■			■	■	■	■		■	■	■			CLIA-IDTC-12-NTHC
12 + TCA	■	■	■		■	■		■	■	■	■		■	■	■	■	■	CLIA-IDTC-12-A
12 + BUP	■	■	■	■	■	■		■	■	■	■		■	■			■	CLIA-IDTC-12-BUPA
13	■	■	■	■	■	■		■	■	■	■		■	■			■	CLIA-IDTC-13-BUPA
13	■	■	■	■	■	■		■	■	■	■		■	■	■			CLIA-IDTC-13-NTHC
14	■	■	■	■	■	■		■	■	■	■		■	■	■	■	■	CLIA-IDTC-14-BUPA
15	■	■	■	■	■	■		■	■	■	■		■	■	■	■	■	CLIA-IDTC-15-BUPA

\* FEN testing items include Fentanyl (FEN) and Norfentanyl (NORFEN)