



BACTRACK® S80

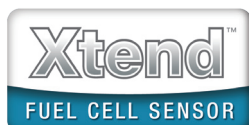
SELECT

BREATHALYZER

TRACKS BLOOD ALCOHOL CONTENT
IN SECONDS

THE BACTRACK SELECT S80
BREATHALYZER USES ADVANCED
FUEL CELL TECHNOLOGY
TO EASILY ESTIMATE BLOOD
ALCOHOL CONTENT

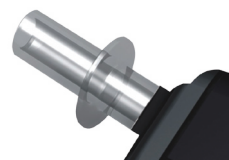
The BACtrack Select S80 is a professional breathalyzer that quickly estimates blood alcohol content (BAC). The S80 is the perfect choice for law enforcement, hospitals, clinics, businesses, and anyone who desires fuel cell accuracy.



Xtend™ Fuel Cell Sensor Technology
The BACtrack Select S80 uses Xtend™ Fuel Cell Sensor Technology. This technology offers the following benefits:

- Linear response of the Xtend fuel cell provides more accurate results over the complete range of alcohol concentrations expected in the breath, from 0.000 – 0.500 %BAC.
- Low power requirements. Get up to 1500 tests on one set of AA batteries!
- Extended sensor life for long-term reliability.

The BACTRACK Select S80 is also not subject to interference from acetone. Acetone may be found in individuals with diabetes. The presence of acetone may result in a false positive on semi-conductor-based breathalyzers, but not with the S80.



**Hygienic
Replaceable
Mouthpieces**



**Professional
Level Test
Results**



**FlowCheck™
Sampling
Accuracy**



**EasyView™ Alert
Notices**

FOR MORE INFORMATION

Toll Free: 1.877.334.6876
Online: www.bactrack.com
Email: info@bactrack.com

KHN Solutions LLC
300 Broadway, Suite 26
San Francisco, CA 94133 USA

BACTRACK® S80

SELECT

TRACKS BLOOD ALCOHOL CONTENT IN SECONDS

NOW AVAILABLE FOR PROFESSIONAL ALCOHOL TESTING APPLICATIONS

The BACTRACK Select S80 is a handheld, battery operated breathalyzer that quickly and easily screens for the presence of alcohol. Every test provides a BAC estimate using proprietary Xtend™ Fuel Cell Technology.

The BACTRACK Select S80 comes with six individually wrapped replaceable mouthpieces that are suitable for clinical or professional use. Simply attach a mouthpiece, press power, and begin testing in a matter of seconds. Additional mouthpieces are available in packs of 10 and packs of 50.

PRODUCT SPECIFICATIONS

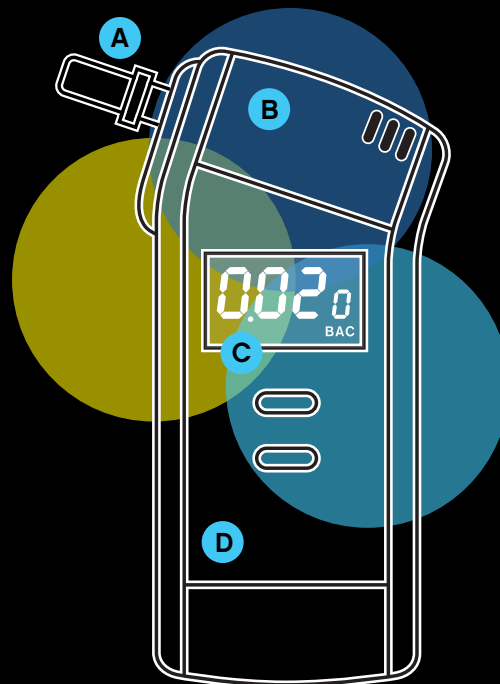
Dimensions.....	2.3 x 4.8 x 0.8 inches (5.8 x 12.2 x 2.2 cm)
Weight	4.8 oz (136 grams) with mouthpiece and batteries
Sensor Technology.....	Electro-chemical fuel cell
Detection Range.....	0.000 – 0.500 %BAC
Mouthpieces	6 included
Test Count	Displays total number of tests performed
Power Supply	Two AA alkaline batteries, included
Battery Life	Approximately 1500 tests
Warm Up Time.....	10~20 seconds
Response Time.....	3 seconds
Sensor Accuracy	+/- 0.005 at 0.050% B.A.C.
Operating Temperature	32-104 °F (0-40 °C)

INTENDED USE

This device is intended to measure alcohol in human breath. Measurements obtained by this device are used in the diagnosis of alcohol intoxication.

KIT INCLUDES

- S80 Breathalyzer
- Hard-shell carrying case
- 6 mouthpieces
- Two AA batteries
- Owner's manual
- One-year limited warranty



- A** Replaceable, hygienic mouthpiece provides a safe and sanitary method for testing multiple users

Mouthpieces are individually wrapped for safe storage prior to first use. Six are included with the S80 Kit

Easy to use - simply insert mouthpiece and begin testing immediately

- B** Crisp 4 digit LCD display provides easy, accurate results. Test results displayed in extended accuracy format: 0.015, 0.081, 0.223 %BAC, etc.

EasyView™ alert notices provide maintenance and test alerts to users

- C** One button operation – press power and begin testing in seconds

- D** Xtend™ Fuel Cell Sensor Technology – provides enhanced linear accuracy from 0.000 – 0.500 and extended battery life

FOR MORE INFORMATION

Toll Free: 1.877.334.6876
Online: www.bactrack.com
Email: info@bactrack.com

KHN Solutions LLC
300 Broadway, Suite 26
San Francisco, CA 94133 USA