

# 01 COMPONENTS

## Components required but not provided



Specimen Collection Container

## Components provided



Test Device



Dropper



Reader

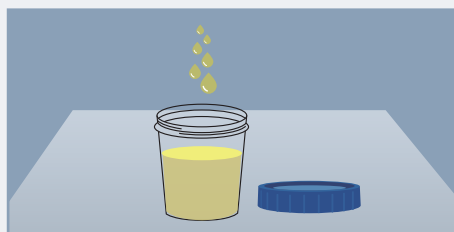


Package Insert

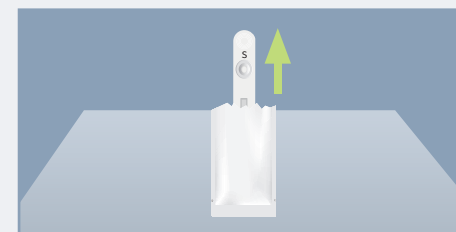
# 02 TEST PROCEDURE



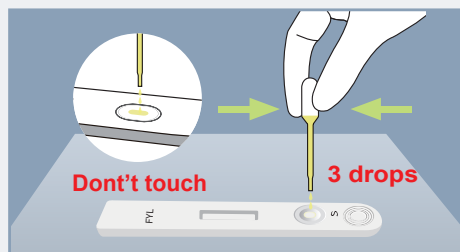
- 1 Press the right button "►" for 5 seconds to turn on the Reader.



- 2 Collect the urine specimen.



- 3 Take the Test Device out of the foil pouch and place it on a clean, dust-free and flat surface.



- 4 Transfer **3 drops** of urine sample to the sample well (S) using the dropper.



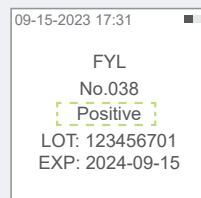
- 5 Insert the Test Device into the slot of the Reader immediately. Please ensure that orientation of the Test Device is as shown in the image above.



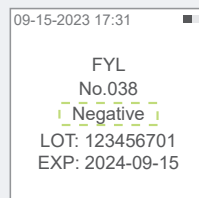
- 6 The Reader will automatically display the result after **5 minutes** countdown.

# 03 INTERPRETING RESULTS

## Positive Results:



## Negative Results:



## Invalid Results:

